

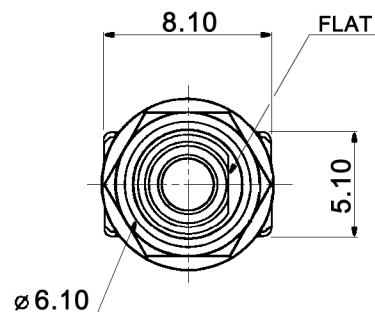
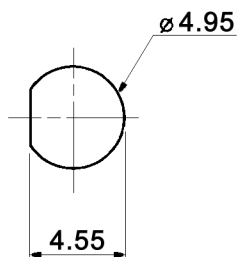


SWITCH FUNCTION

Model No.	POS. 1	POS. 2
		
MZP 1 D	ON	ON
Term. Conn.	1-2	2-3



PANEL MOUNTING



Compliance: RohS II (2011/65/EU)

Tolerances: 0.00: ±0.25mm 0.0: ±0.40mm	Date	Name
	11/09	dr
Specifications	10/15	dr
Hardware dimensions	09/14	dr
Modifications	Date	Name

MZP 1 D x

30 19 48

Page

1/2

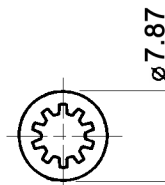
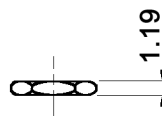
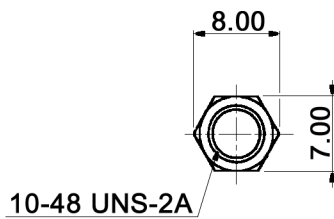
knitter-switch

Specifications:

Contact resistance: 20mOhm max.  
 Insulation resistance: 1 000MOhm min. at 1 000V DC  
 Dielectric strength: 1 000V AC for 1 minute  
 Operating temperature: -30°C to +85°C  
 Mechanical life: 50 000 make-and-break cycles  
 Electrical life: 6 000 cycles  
 Operating force: 500 +/-150gf  
 Material: Plunger: PA  
 Bushing: brass, nickel plated  
 Housing: stainless steel

x	Contact / terminal	
	plating	rating
empty	silver	1A/250VAC; 3A/120VAC; 3A/28VDC
B	gold	0.4VA, 20V
G	gold over silver	1A/250VAC; 3A/120VAC; 3A/28VDC

HARDWARE:



0.46 THK

Compliance: RohS II (2011/65/EU)

Tolerances: 0.00: ±0.25mm 0.0: ±0.40mm		Date	Name	<b>MZP 1 D x</b>	
		11/09	dr		
			<b>knitter-switch</b>	<b>30 19 48</b>	
Modifications			Date	Name	Page 2/2